

DANRE selm Antibody (C-term)
Affinity Purified Rabbit Polyclonal Antibody (Pab)
Catalog # Azb10029b**Specification**

DANRE selm Antibody (C-term) - Product Information

Application	WB,E
Primary Accession	Q802G7
Reactivity	Zebrafish
Host	Rabbit
Clonality	Polyclonal
Isotype	Rabbit IgG
Calculated MW	17172
Antigen Region	96-119

DANRE selm Antibody (C-term) - Additional Information**Other Names**

Selenoprotein M, SePM, SelM, selm, sepm

Target/Specificity

This DANRE selm antibody is generated from rabbits immunized with a KLH conjugated synthetic peptide between 96-119 amino acids from the C-terminal region of DANRE selm.

Dilution

WB~~1:1000

E~~Use at an assay dependent concentration.

Format

Purified polyclonal antibody supplied in PBS with 0.09% (W/V) sodium azide. This antibody is purified through a protein A column, followed by peptide affinity purification.

Storage

Maintain refrigerated at 2-8°C for up to 2 weeks. For long term storage store at -20°C in small aliquots to prevent freeze-thaw cycles.

Precautions

DANRE selm Antibody (C-term) is for research use only and not for use in diagnostic or therapeutic procedures.

DANRE selm Antibody (C-term) - Protein Information

Name Selenom {ECO:0000250|UniProtKB:Q8WWX9}

Function May function as a thiol-disulfide oxidoreductase that participates in disulfide bond formation.

Tissue Location

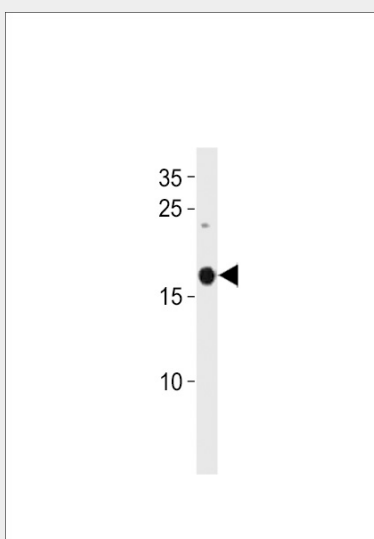
During early embryogenesis, abundantly expressed within the notochord and anterior somites. At later stages, accumulates within the axial fin fold, dorsal spinal cord neurons, then in lateral line neuromasts.

DANRE selm Antibody (C-term) - Protocols

Provided below are standard protocols that you may find useful for product applications.

- [Western Blot](#)
- [Blocking Peptides](#)
- [Dot Blot](#)
- [Immunohistochemistry](#)
- [Immunofluorescence](#)
- [Immunoprecipitation](#)
- [Flow Cytometry](#)
- [Cell Culture](#)

DANRE selm Antibody (C-term) - Images



DANRE selm Antibody (C-term) (Cat. #Azb10029b) western blot analysis in zebra fish heart tissue lysates (35ug/lane). This demonstrates the DANRE selm antibody detected the DANRE selm protein (arrow).

DANRE selm Antibody (C-term) - Background

May function as a thiol-disulfide oxidoreductase that participates in disulfide bond formation (By similarity).

DANRE selm Antibody (C-term) - References

Thisse C., et al. Gene Expr. Patterns 3:525-532(2003).